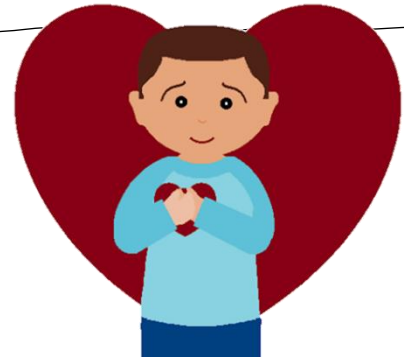


A verse to remember

1 Samuel 16 v 7

People look at the outside of a person but the Lord looks at the heart.



What do you think God wants our hearts to look like?

David was described as a man “after God’s heart.” How can we make our hearts look like God’s?

To learn this verse together, you could come up with some actions to help you remember it or decorate a copy and put it up somewhere you can see it during the week.

Family Activity 2

What’s inside?: Place mystery items into an empty box or container, take turns reaching inside and try to work out what the item is without looking. In the story Samuel was judging the sons of Jesse by how they looked on the outside, but God had a very different way of deciding who would make the best King!



Active Prayer

Travel around your home and look for photos or images of people that you can pray for.

You might like to pray for people that you know and see in photos or groups of people that appear in books e.g. teachers, firefighters, etc.

If you do not have many printed photos you could look through digital photos on a computer or phone to find people to pray for.



Active Listening

When you have prayed for each person why not pause and listen to God. Ask God to share something with you about what He loves about that person on the inside.

David the Shepherd

David was not home when Samuel arrived, he was out in the fields watching the sheep. In **John 10** we can read about how God is like a shepherd to us. He cares for us, protects us and invites us to trust, follow and listen to Him. Why not try some of these sheep themed activities together.

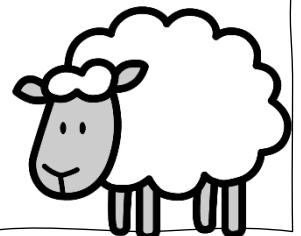
Hunt the sheep

You will need: A toy sheep or sheep picture (you can always draw your own!) Take turns hiding the sheep around the house or in a room while everybody searches for the sheep. The person who has hidden the sheep could give clues such as ‘warmer’ when somebody is getting nearer to the sheep and ‘colder’ if they are moving further away.

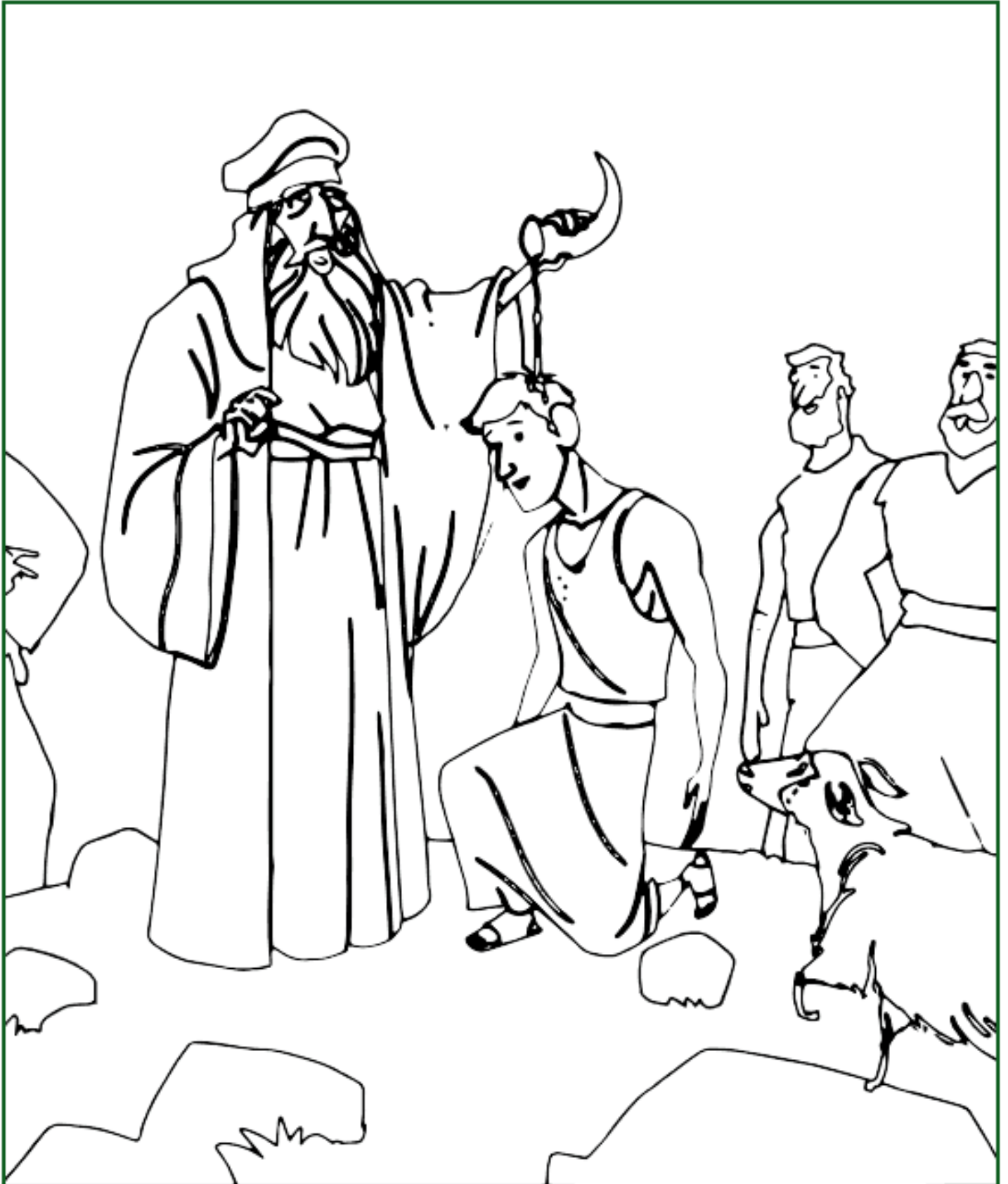
Which sheep is that?

Jesus said that the sheep recognize the voice of the shepherd and run away from the voices of strangers, why not test how good you are at recognizing voices.

Take turns closing your eyes, while somebody else speaks in a silly voice. Can you still recognize who is speaking?



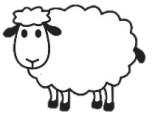
Coloring Page



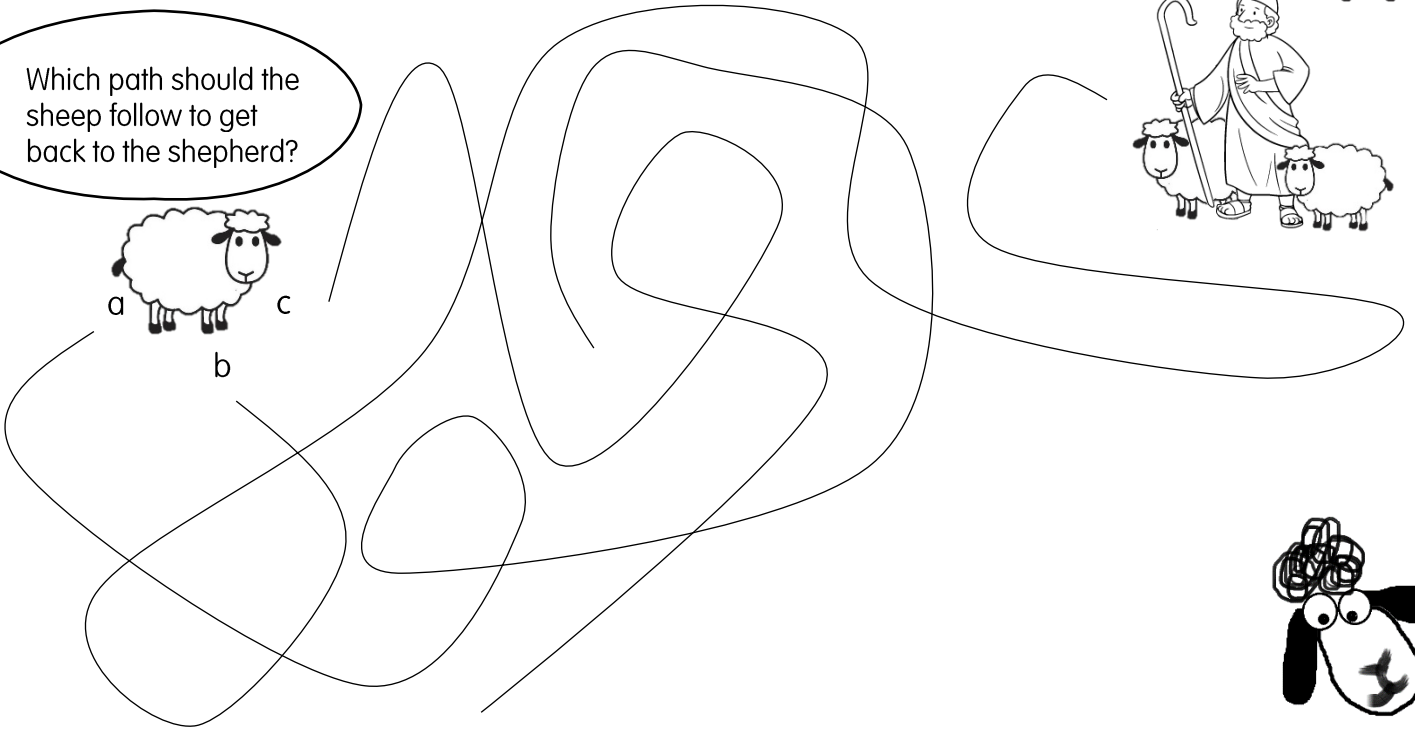
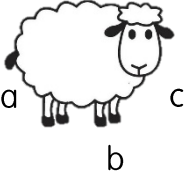
Samuel anointed David.

PUZZLE SHEET

David was a shepherd – how many sheep can you find on this page?



Which path should the sheep follow to get back to the shepherd?



Can you find eight differences between the two pictures?

Draw a big tangly scribble to give the sheep a body, then finish the picture by adding a lovely green field full of delicious grass for the sheep to eat!

